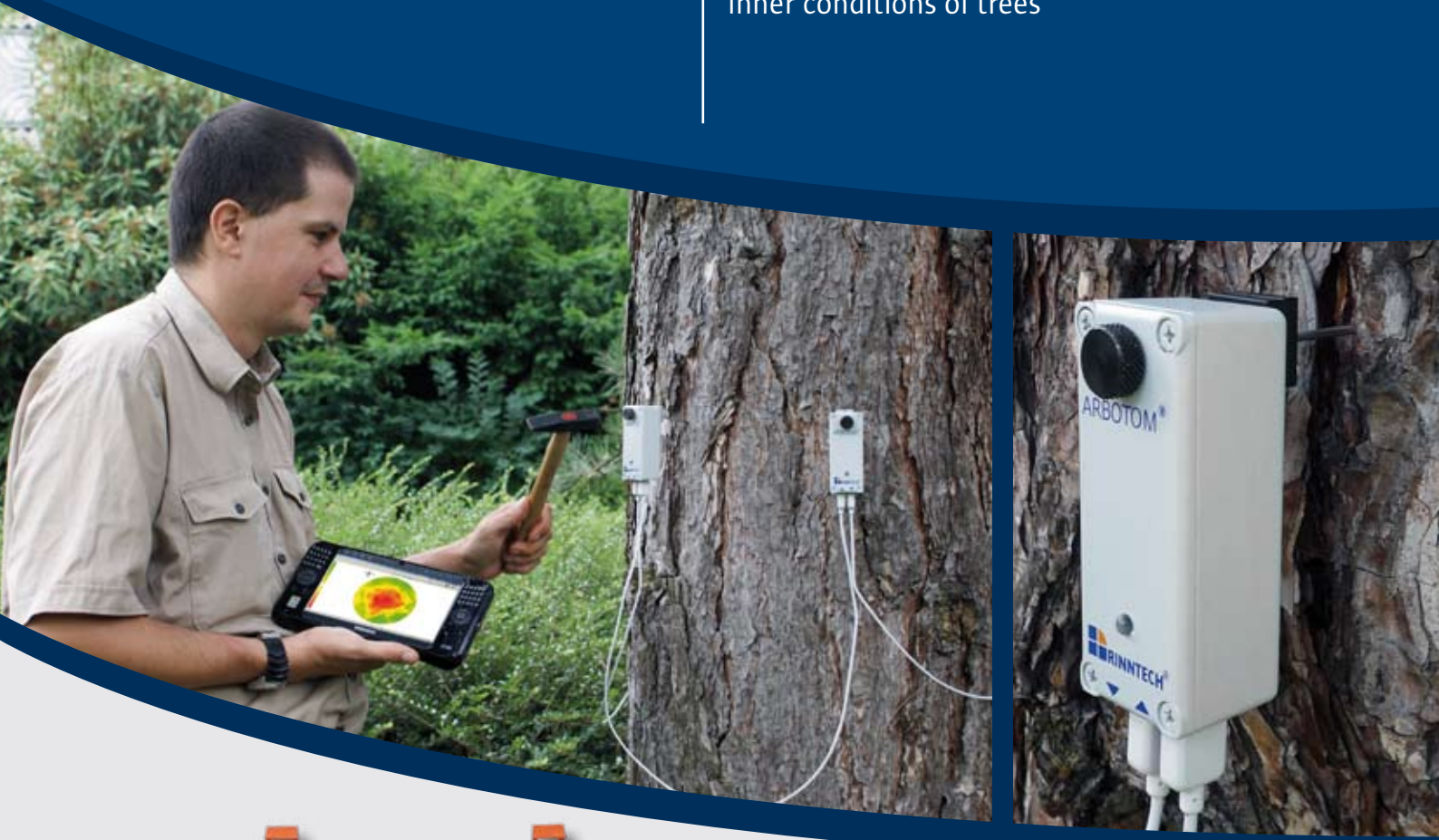


# ARBOTOM®

3-D Impulstomograph

Non-destructive inspection of the inner conditions of trees



- flexible
- easy to handle
- fast
- precise
- reliable

ARBOTOM® System with complete accessories

RINNTECH®, ARBOTOM®, RESISTOGRAPH® are registered trademarks of Frank Rinn in several countries.

# ARBOTOM<sup>®</sup> Version 5

3-D Impulstomograph

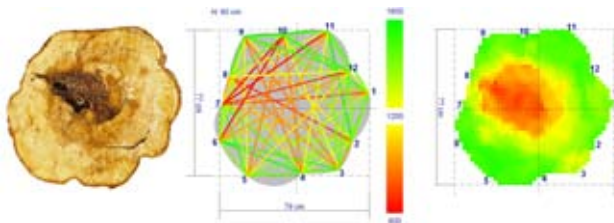
## Fields of application

The ARBOTOM<sup>®</sup> Tree Tomograph is an instrument for tree risk assessment and wood quality evaluation. It provides an impression of the inner condition of a tree in very little time.

If used in combination with the new ARBORADIX<sup>™</sup> it can even detect roots below pavement.

## Method

Stress waves travel through sound wood faster than through damaged wood. Sensors around the tree measure the time it takes an impulse to travel through the wood and reach the other sensors. The collected data is simultaneously send to a computer which will turn the data into a colored image of the tree's cross-section.



## Advantages

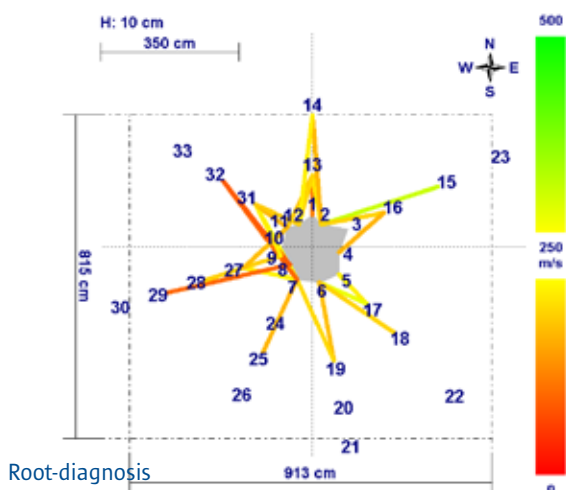
The ARBOTOM<sup>®</sup> is fast and easy to handle: Setting up the system and measuring a full cross-section takes no more then 15-30 minutes. The tomograph image will show up immediately.

If testing is done in different heights, a 3-D image can be created.

It is non-destructive: Sensor pins are driven only a few millimeters into the wood.

It is flexible: A variable number of sensors can be attached to the system, starting with 6 or 8 Sensors for 2D images of small cross-section and up to 24 to create a 3D Image of bigger stems.

The ARBOTOM<sup>®</sup> software completely documents all measured data, giving a chance to sort out single measurements, if needed.



## Operation

1. Attach sensors to tree, connect them with each other and enter positions into analysis software
2. Knock on each sensor with the hammer
3. Image of cross-section immediately appears on the screen and can then be saved and printed out.

## System components

RINNTech<sup>®</sup> offers different packages of the ARBOTOM<sup>®</sup>, meeting the different needs and fields of application of its customers.

The amount of sensors varies between 2 and 24 (or 36), with the option of adding more sensors to the system.

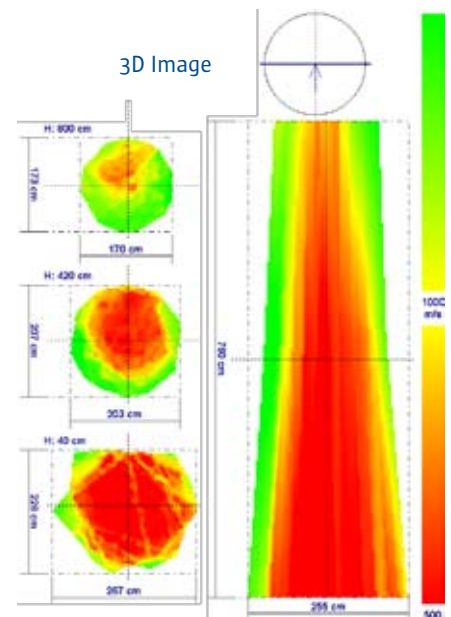
All packages include a battery pack with wireless computer connection, a carrying case with wheels, software, sensor pins and accessories.

## Upgrades

The ARBOTOM<sup>®</sup> can be upgraded with several features such as the root-detection system ARBORADIX<sup>™</sup>, a Mechanic Graph Modul to estimate the weakest point of the tree to wind load and an automatic graphic series generating for survey-reports.

## Service

As a company with over 20 years of experience RINNTech<sup>®</sup> does not only sell tree and timber inspection devices, but also provides on site training as well as in-house seminars.



Hardtstraße 20-22  
69124 Heidelberg/Deutschland (Germany)  
Tel: (+49) 06221 71405-0  
Fax: (+49) 06221 71405-234  
info@rinntech.com

Visit us at:

[www.rinntech.com](http://www.rinntech.com)